

# HB 20P Booster

## Technical Information

Integrated Home Booster for In-building Coverage

Home Booster HB20 is a single band cost effective solution for homes and small offices. Available in full band and operator specific band, the HB20 is a complete "Do It Yourself" kit.

Designed to match the interior décor, the booster enhances coverage in areas up to



## Salient Features

- Compatible with GSM, CDMA, iDEN and WCDMA technologies.
- Available for SMR 800 / Cellular 850 / iDEN / EGSM / GSM 900 / DCS 1800 (60MHz bandwidth) / PCS 1900 / UMTS frequency bands.
- Designed for indoor applications
- Conforms to ETSI standards and safety requirements.
- Works with frequency hopping BTS
- APC (Automatic Power Control) for maximal linear output power
- Low power consumption
- Compact size and light weight
- Simple installation, Do It Your self Kit

## Model No

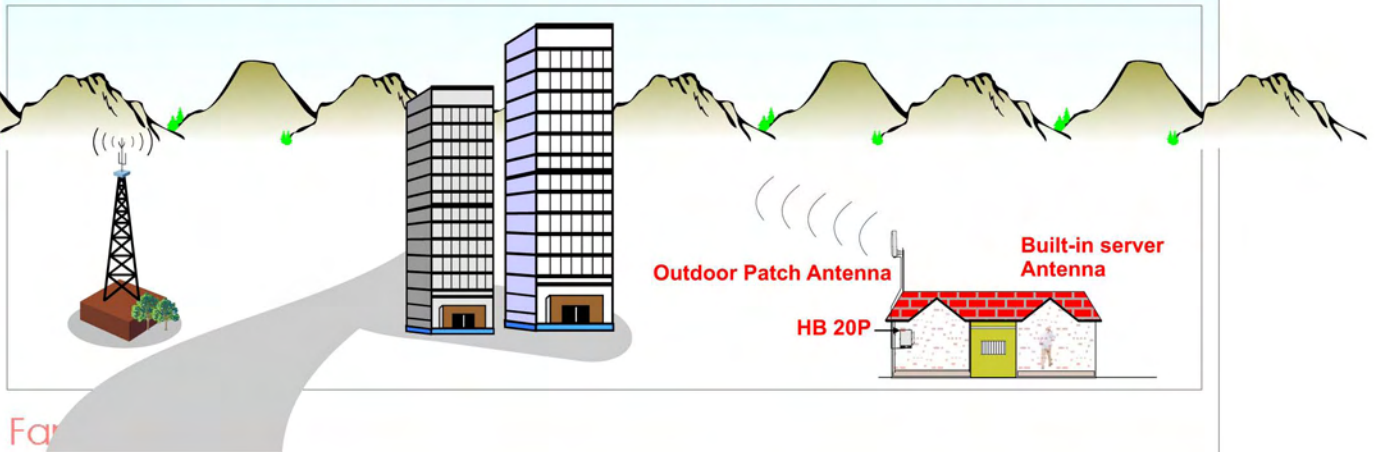
HB 20P

## Specifications

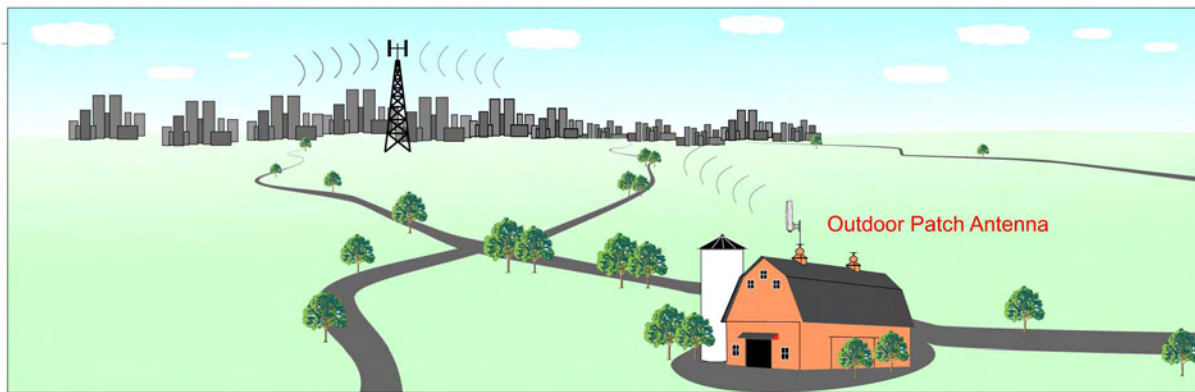
Gain	70 dB max.
Output RF Power (Composite)	+15 dBm max.
IMD & Spurious Emission	<-36dBm @ 9KHz-1GHz <-30dBm @ 1GHz-12.75GHz
Noise Figure	8dB Max.
V.S.W.R.	1.5 Max.
Power adapter (9V DC, 2 Amp.)	AC 100-240 V, 50/60 Hz
Power Consumption Approx.	15 watts
RF Connector	SMA (F) Type
Dimensions (WxDxH) Approx.	85x165x40 mm (3.3x6.5x1.6 Inches)
Weight Approx.	0.7 Kg. (1.5 lbs)
Operating Temp. Range	-5°C to +55°C (+23°F to +131°F)

## HB20P Booster

### In-house coverage improvement through Home Booster installation



Far



### In Basement

