



An Axis company

2N® EasyGate PRO



Telephone connection even in places without a landline

2N® EasyGate PRO is a one-channel analogue GSM gateway giving the user an opportunity to save costs on calls to GSM networks.

2N® EasyGate PRO can be used for voice, data, analogue FAX and SMS transmission. It allows you fixed line functionality but in a mobile solution.



- **Battery back-up**
- **GSM signal indicator**
- **USB connector**
- **SMS alerts**

Features:

- Voice calls over GSM
- FAX, SMS sending/receiving and Data connection (GPRS/CSD)
- Internal battery back-up
- SMS alerts about power failure/restoration
- Baby Call as an automatic dial feature
- Identification of calling party from GSM (FSK CLIP)
- Rechargeable batteries in package (optional)

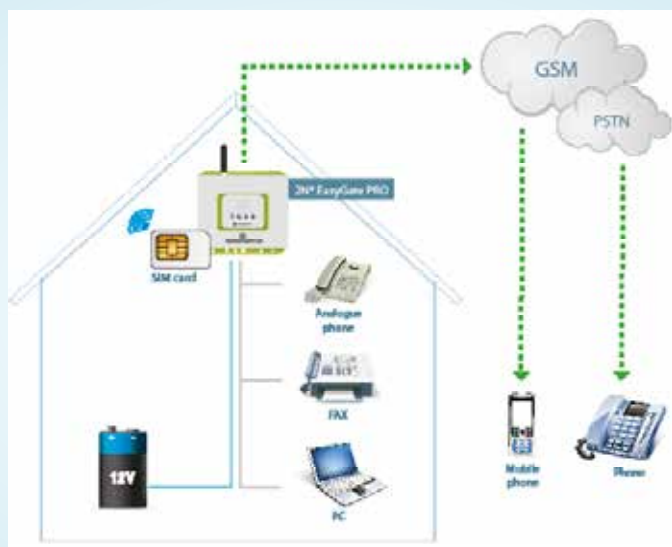
Benefits:

- Cost reduction solution
- Fixed line replacement
- Analogue FAX over GSM

Intended for:

- Small companies with up to 40 employees
- Home Offices
- Households in rural areas
- Elevator companies

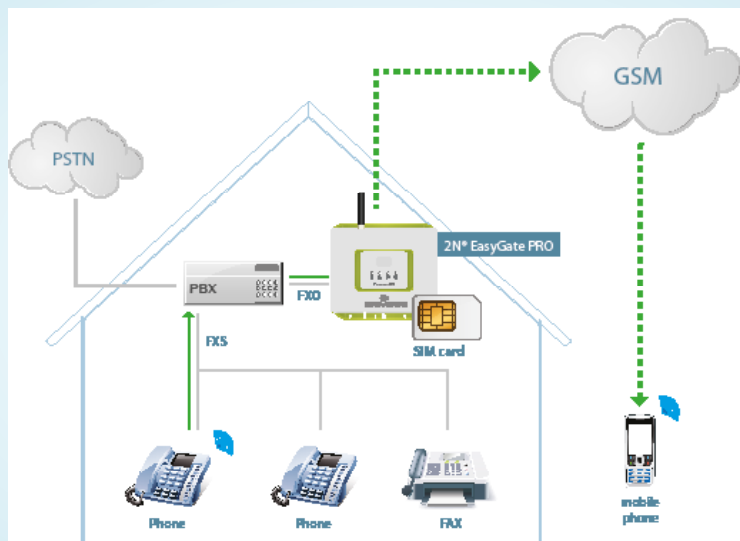
Fixed line replacement



You can connect an analogue phone or PBX to get voice connection. A PC connected to a USB port can access the Internet and send/receive SMS messages.

The 2N® EasyGate PRO can be used in areas where a fixed line is not available, or as an alternative for persons/companies that no longer want to use fixed lines.

Cost savings scenario



In this scenario, companies connect the 2N® EasyGate PRO to their existing PBX with an analogue interface. All calls to mobile networks are routed via the gateway and customers can save up to 70 percent on their calling costs.

Technical Parameters

GSM interfaces	
GSM	850/900/1800/1900 MHz
DATA	GPRS Class 10, CSD max. 14.4 kbps
SIM card	3V and 1.8V
Fax	G3 Analog Fax (optional)
Telephone interface	
FXS Line	For Phone, G3 FAX device, PBX CO line
Dialing type	Tone (DTMF) and pulse
Calling line ID	CLI via FSK
Power Supply	
Power adaptor supplied with gateway (12V/0.5A)	
External power supply from 10 to 16V DC can be used	
AA rechargeable battery back-up integrated (optional)	
Management interface	
USB port	SMS, Configuration, Upgrade
Data interfaces	
USB port	For GPRS and CSD connection
FXS line	For CSD connection (optional)

